

# WITNESSER Charlotte White | April 8<sup>th</sup> – April 22<sup>nd</sup>

**1      *A Black Year***

Charcoal on Reeve's Mounted to Board  
38x77 (diptych)  
2016/17  
\$1600



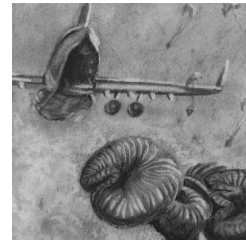
**2      *Irrefutable Evidence of an Insatiable and Unjustifiable Taste for Outlaws and Alcoholics***

Oil on mounted board  
18x28  
2016/17  
\$600



**3      *Sorry I'm***

Charcoal on Reeve's Mounted to Board  
28x42  
2016/17  
\$800



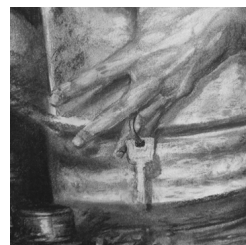
**4      *Church Camp***

Charcoal on Reeve's Mounted to Board  
41x43  
2016/17  
\$1100



**5      *Equivocations on a Robbery, Valdez***

Charcoal on Reeve's Mounted to Board  
38x33  
2016/17  
\$1200



**6 Shots Fired**

Oil on mounted board  
20x26  
2016/17  
\$500



**STATEMENT**

This exhibit focuses around the physical conglomeration of personal and pandemic tragedies manifested through the act of seeing, as the witness, the viewer, and the artist. Testimonies of trauma pulled from individuals are transposed into a 2D image that blends fact with fiction thereby creating a space in which the viewer can connect their own firsthand storyline, the collective personal trauma. This community of witnessing brings together each individual perspective that allows for the viewer to grasp the magnitude of the event while simultaneously taking part in it. Within my work, publicly accessible images of oil spills, human induced wildfires, decomposing mental wards, nuclear bombings, etc., are used in combination with moments of personal hysteria, death, humiliation and loss to create a new landscape that explores the ties between how individuals navigate incidents based upon their own memories and experiences with the world. The viewer also incorporates large-scale disasters directly linked to man's folly as a theoretical individual marker for accessing empirical investigation. This orchestrated amalgamation of tragic imagery provides an idiosyncratic waypoint to navigate the human pandemic, a coping mechanism, and a lantern in the dark.

**BIO**

Charlotte White graduated from University of North Carolina - Greensboro, in 2010 and is currently working towards her MFA at Western Carolina University. She continually showcases her work in galleries across the east coast while also working as a part time commission artist. Her personal work focuses on declining animal populations, deforestation, and other human induced trauma. She currently resides in Cullowhee, NC where she works in multi-medium formats for her graduation this spring.

*This exhibition made possible by the support of the WCU Grad program and  
Derek Dominy + Denise Carbonell*



122 Riverside Dr. Studio F Asheville NC | [www.revolveavl.org](http://www.revolveavl.org)